



## SigmaDSTV SW

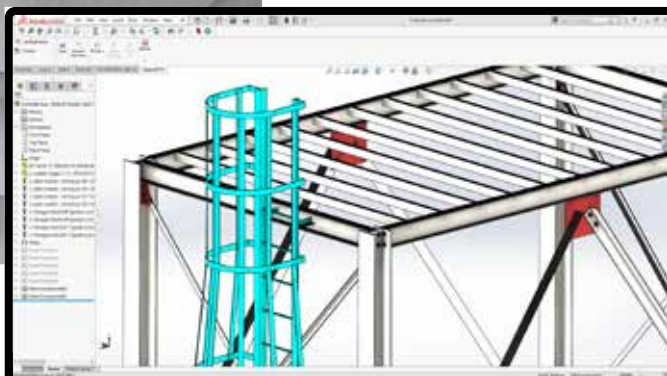
### Seamless DSTV Conversion in SOLIDWORKS

#### **Integrated for Efficient Workflow**

SigmaDSTV SW is a DSTV exporter plugin that runs inside of SOLIDWORKS and is designed to generate NC1 files for beam line and beam coping machines. The seamless integration between the SigmaDSTV plugin and SOLIDWORKS ensures an easy and efficient way to export structural designs into DSTV format.

#### **Smart and Automatic**

With the ability to generate DSTV files directly from native SOLIDWORKS models, SigmaDSTV SW enables users to convert single parts, multibody parts, weldments, and even assembly files. SigmaDSTV automatically recognizes profiles compatible with the NC1 format for intelligent processing.



#### Create files from:

- Flat Plate
- Round
- Rectangular
- Angle
- Channel
- I-Beam

### + Fast Processing

- Directly import any major 2D and 3D file for painless part and assembly creation
- Automatic profile recognition separates structural steel parts from other kinds of parts like nuts and bolts
- Batch processing supports a fully automated workflow and ERP/MRP integration

### + Cost-effective

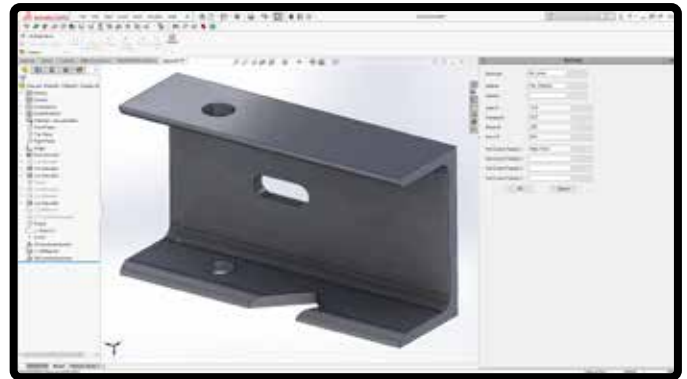
- Includes all features and abilities needed to go from CAD model to machine file in seconds
- Automatic recognition of sketches as the marking process
- Able to detect all configurations of a SOLIDWORKS part and export each as an NC1

### + Customizable

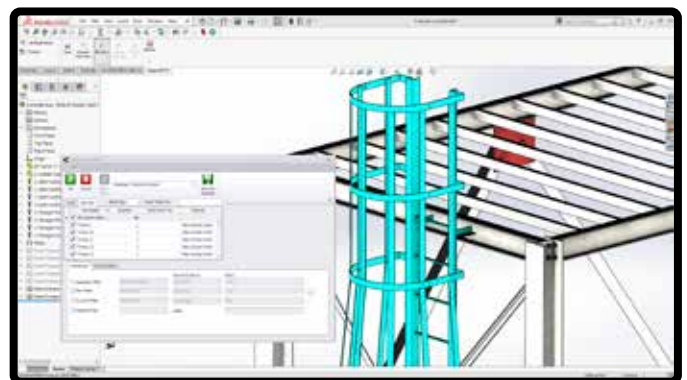
- Supports export of various views and different header mappings to match the needs of any beam line machine
- Editable part reports to output properties and operator information using the included easy-to-use editor

### + SOLIDWORKS > DSTV

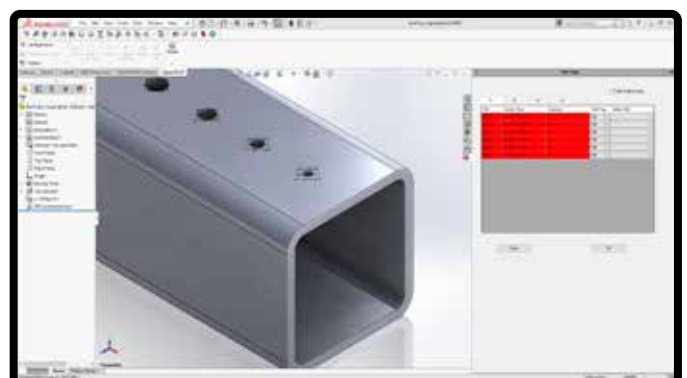
- STEP > DSTV
- IGES > DSTV
- SLDPRT > DSTV
- Supports all SOLIDWORKS file types



Full property mapping capability



Batch processing for greater efficiency



Drill menu